



The American Scholar Experience

Study in America for International Students



The American Scholar Group (ASG) is a full-service education consulting organization dedicated to facilitating study-in-America opportunities and cross-cultural experiences. Based in Western Pennsylvania and Eastern Ohio, ASG's programs serve American and international students, teachers, and administrators.



Apply via an Education Consultant

- Contact an American scholar representative in your country
- Visit our website: www.americanscholargroup.com

Why U.S Education?

PART 1: DECIDE



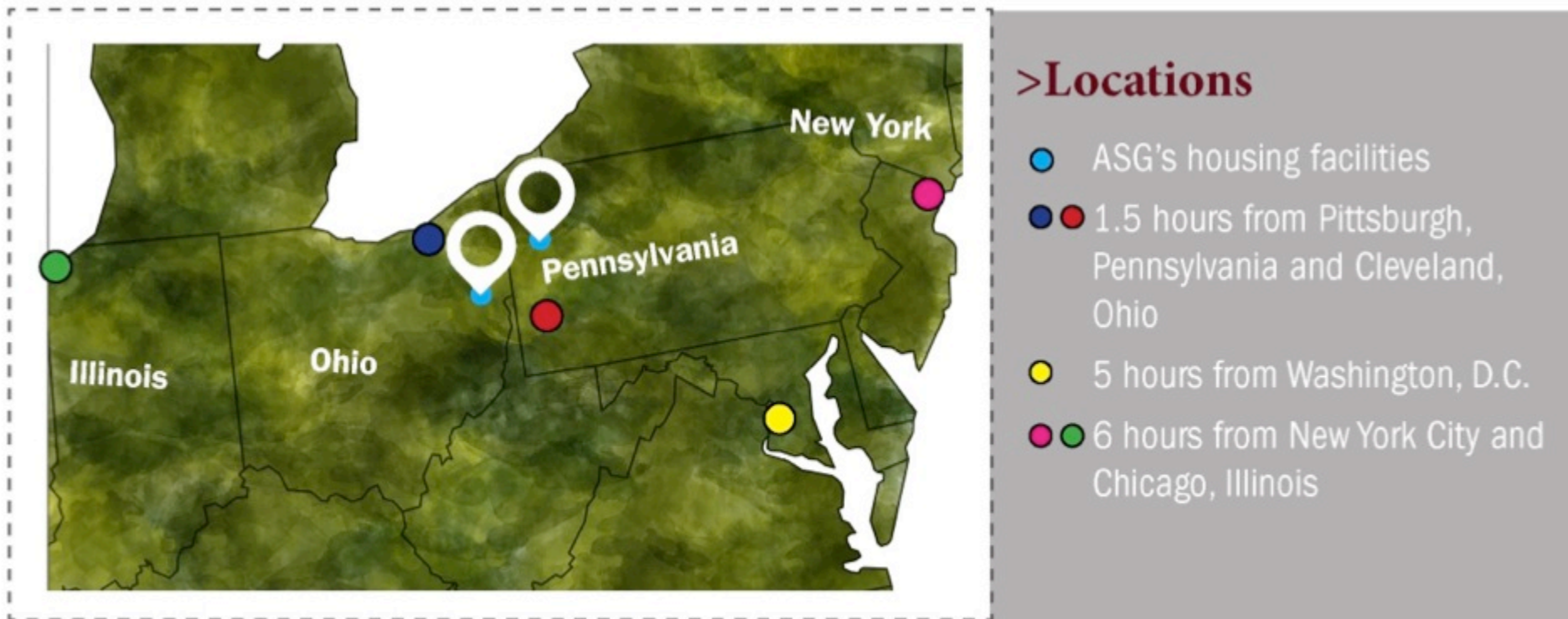
- American Education caters to the individual's interests and capabilities
- U.S Students have more choice and control over their educational paths
- U.S students are given the time and freedom to discover their interests and passions
- U.S students can change their education Majors and Minors to suit their interests and strengths
- **All these factors allow a student to:**
 - *Learn at their own pace*
 - *Pursue their interests without the pressure to conform to rigid standard tracks or streams*

Why Begin at a U.S High School?

PART 1: DECIDE



- Build a U.S. Academic Track Record that admissions counselors can recognize
 - Allows Admissions Counselors to compare international students to American Students
- Increase an international Student's chances to gain admission to top universities
- Develop the soft skills necessary for succeeding in a new country and environment
 - Confidence
 - Familiarity with American customs and culture
 - An easier integration process



Where We Live

- ASG's partner schools, universities, tutoring centers and housing facilities are located in Greenville, Pennsylvania and Struthers, Ohio.
 - **Small university towns—peaceful, quiet, friendly—perfect environments for international students**

Scenes from Greenville, PA



School Placements & Admissions

PART 1: DECIDE



- Choose a top school in Western Pennsylvania and Eastern Ohio
- Learn from an American School curriculum
- Choose the academic path that best suits you
- Consider interests, preferences, goals, objectives
- Interact with American peers
- Participate in school activities and events

American Scholar Group SCHOOL PARTNERSHIPS

Pennsylvania



Kennedy Catholic High School



Living Word Christian School



Central Catholic High School



Ursuline High School



Holy Family School



Saint Charles School



Saint Nicholas School



Jamestown High School



Greenville High School



St. Thomas Aquinas High School



Cardinal Mooney High School



John F. Kennedy Catholic School



Saint Patrick School



Saint Christine School



Sharpville High School

Universities



Gannon University



Thiel College



La Roche College



www.americanscholargroup.com

Managing Parents & Student Expectations

American Scholar Group helps students succeed by:

- Providing them a full range of services that meet their academic and emotional needs
 - Providing on-going communication with representative, parents, and guardians
 - Sending progress reports and updates on a quarterly basis
 - Sharing successes and achievements of students with parents throughout the school year
- All parents want the best for their child. They want him or her to succeed in a new school, country, and environment.
 - **ASG is committed to keeping parents informed of their child's progress and giving each student the support they need to succeed!**

PART 2: ACCEPTANCE PROCESS

■ Acceptance

1

- Based on grades, transcripts, interviews, tests, English skills, letters of recommendation, personal statement
- ASG works with partner schools to find the best placement based on the students academic strengths and extra-curricular interests

■ Deposit

2

- Once Acceptance letters are issued, schools require students to pay a deposit before I-20 can be issued
- Deposits must also be made to ensure students' school & ASG placement

■ I-20

3

- Legal document issued by Homeland security to allow students to study in the United States
- ASG will assist students through this process as we work with our partner schools to ensure students are ready to attend school

■ Visa Process (F-1)

4

- Once I-20 is received, arrange and prepare for a visa interview with U.S. Embassy to apply for your visa
- The visa is a stamp/sticker placed on one of the pages of your passport by an officer of the American Embassy in your home country
- Your visa is an F-1 non-immigrant, academic, student visa
- Once F-1 visa is issued by the U.S. embassy in your home country, all outstanding balance payment must be made

Pre-Departure Preparation

- Purchase a Round Trip Airline Ticket
 - Allow for a minimum of **3 hours** between connecting flights
 - Your Airport Destination: Pittsburgh International Airport (PIT)
- Get all necessary medical immunization
- Brush Up Your English skills
- Provide ASG:
 - Contact Information (Name, Home Address, Phone number, Email)
 - Flight Itinerary

What You Should Bring:

- Clothes appropriate to all 4 seasons
- Formal Dress Attire
- All legal papers and important documentation
 - Passport, I-20, F-1 Visa, Medical records, Transcripts
- ASG Luggage Tag and Stickers for Airport Identification
- Contact Information for Custom Purpose





➤ **Winter Clothes**



➤ **Formal Attire**

PART 3: PRE-DEPARTURE

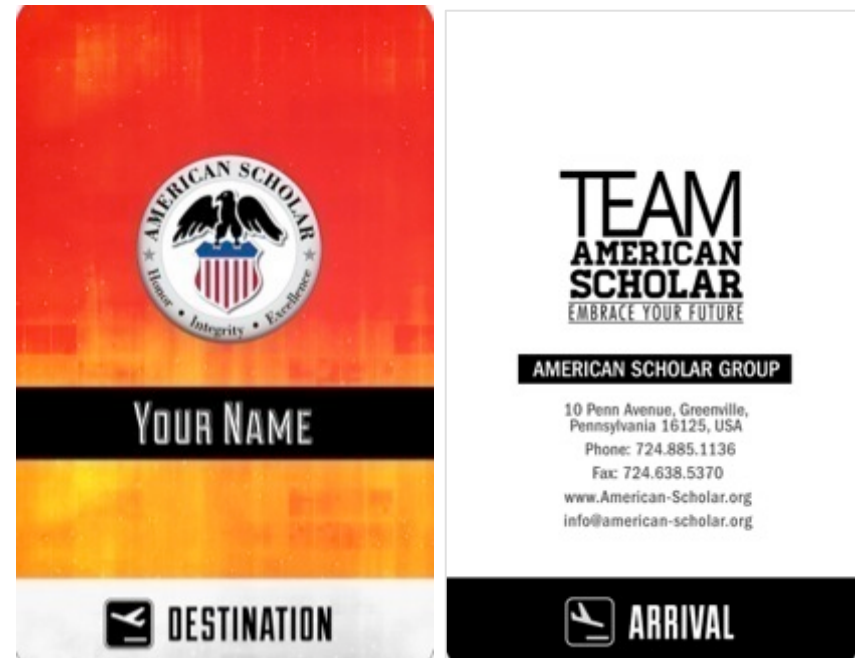
Contact Information

American Scholar Group

- 10 Penn Avenue, Greenville, Pennsylvania 16125, USA
- Corporate Office: 724-885-1136

Emergency Contact Numbers

- +1 (724)-456-6725
- +1 (724)-699-6524
- +1 (724)-813-1331
- +1 (724)-456-2423
- +1 (724)-456-6279



Luggage Tags

- **Sent to student before arrival**
- **Ensure luggage(s) are delivered to our facility in the event they become misplaced during travel**

PART 3: PRE-DEPARTURE



Luggage Tag
Placement



Luggage Sticker
Placement

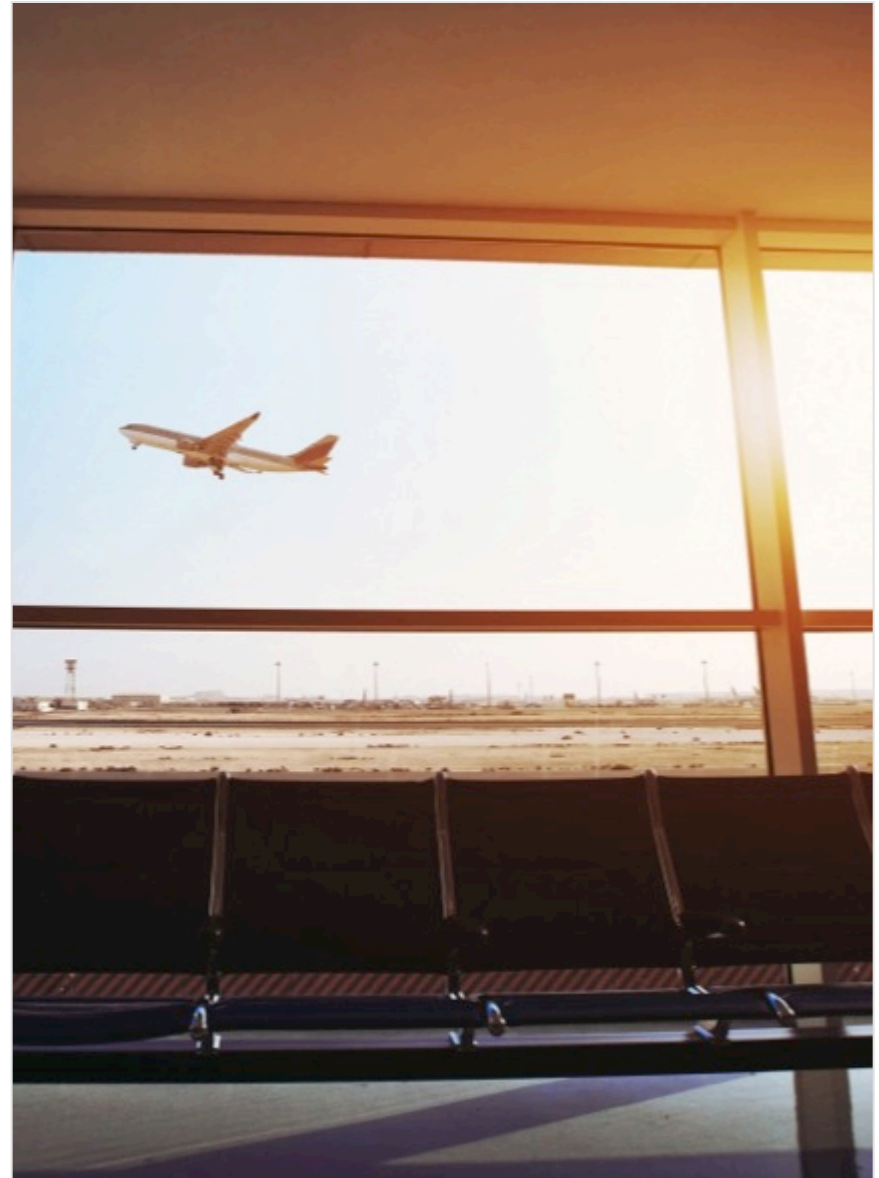
If You Missed Your Flight...

- Clear Customs
- Contact Your Airline/ Go to your airline Information Kiosk and arrange/purchase a new flight
- Call us to reschedule a new pick up time

Travel Tips:

- Allow a 3 hour window between connecting flights in case of delays or cancellations!
- Suggested American Airports for custom clearance purposes:
 - Detroit, Chicago, Atlanta
- Suggested Airports to Avoid:
 - New York City, Newark, Philadelphia, Los Angeles

PART 3: PRE-DEPARTURE



PART 4: ARRIVAL

Arrival Procedures:

- ① Airport Pickup
 - Look for ASG Staff Members with the proper identification tags
 - ASG Staff members may also be carrying signs with the ASG logo



- ② Our Vehicles
 - *If you cannot find any staff members, please call the emergency contact numbers provided to you in the welcome packet*

- ③ **ASG drivers will have international phones for students to contact parents about their safe arrival**



**PART 4:
ARRIVAL**

Orientation

- ① Meet Staff and Students
 - Get acquainted with your counselors and academic advisors
- ② Tour residence halls and community square
- ③ Review ASG rules and policies
- ④ Review your class schedule
- ⑤ Receive your ASG Identification card
 - New ID cards are issued every year
- ⑥ Ask questions, share concerns and get settled in!



PART 5: ASG—YOUR FAMILY

ASG Student Support Services

- Help answer questions students have about life in the U.S.
- Provide students with support, guidance, and encouragement during their stay
- Assist students with achieving their goals
- Assist students with any problems they may have
- Provide students tutoring and scholastic assistance
- Assign students academic coordinators that regularly contact schools to monitor their progress and ensure that their needs are met

Cultural Clashes

PART 5

ASG student support staff are committed to helping students make a smooth transition across cultures by:

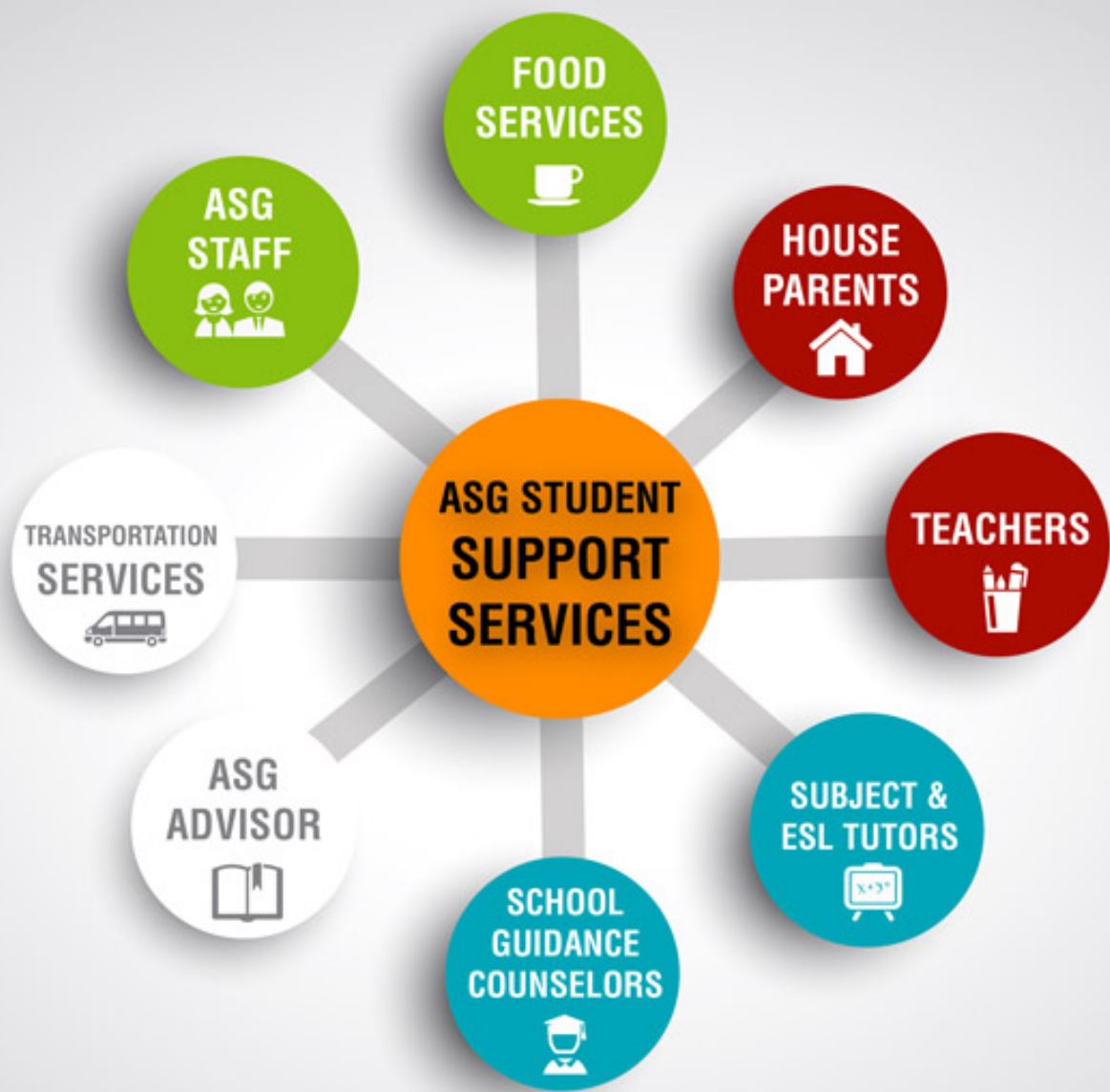
- Fostering an understanding of American norms & customs
- Hosting programs and events that allow international students to remain in touch with home



The ASG Model: Community-Living

- The ASG model combines the benefits of the home-stay and boarding school model:
 - Students can enjoy both independence and the support of a tight-knit community without feeling isolated and constricted
 - Numerous opportunities for student interaction and fostering social skills
 - A collection of housing families within the larger ASG community
 - **Students are supported by an entire community of staff, students, tutors, teachers, counselors, advisors, housparents, dining & transportation staff**





Our Housing Facilities

PART 5



Hamilton Hall



Pennsylvania House



Columbia House



Princeton House



Stanford House

Housing Options



➤ College – Style Housing



Housing Options



➤ Residential – Style Housing



Safety & Security

- All facilities are equipped security cameras
- Student curfews are enforced on school nights
- Counselors and guardians always on-call
- Housemasters always ready to meet students' needs
 - Full-time staff
 - First-aid trained





PART 5

Houseparents

In each living facility, students are supported by houseparents who:

- Foster strong relationships and an enduring sense of community within housing families
- Provide mentorship
- Emotional & Social Support
- Prepare meals
- Keep housing facilities clean
- Oversee student welfare



Student Transportation Services

ASG has a dedicated van service to support the needs of its students

- **Licensed, professional driving staff**
- **Passenger vans for student transportation**
- **Travel support services**
- **25 miles/40 kilometers radius from residential housing**
- **One round trip from airport**
- **ASG organized trips are free of charge**
- **Customized trips subject to additional cost**



PART 5

Dining Services

- Students served balanced meals twice daily:
 - Weekdays (Breakfast & Dinner)
 - Weekends (Brunch & Dinner)
- American and International cuisine



PART 5

Formal Dining Programs

- Held monthly, each with its own special theme and purpose
- Formal dining events give students opportunities to foster dining etiquette and conduct themselves in a professional manner

Student Medical Insurance

- Covering major accidents and Hospitalization only



Bank Account

- Students will set up their bank accounts during orientation week with PNC Bank



Minor Misconduct

- Skipping School
- Skipping after-school tutoring
- Unauthorized Travel
- Lying
- Planning trips without consent

A verbal warning is issued on the first offense.

A letter will be sent home to a student's parents after the second offense

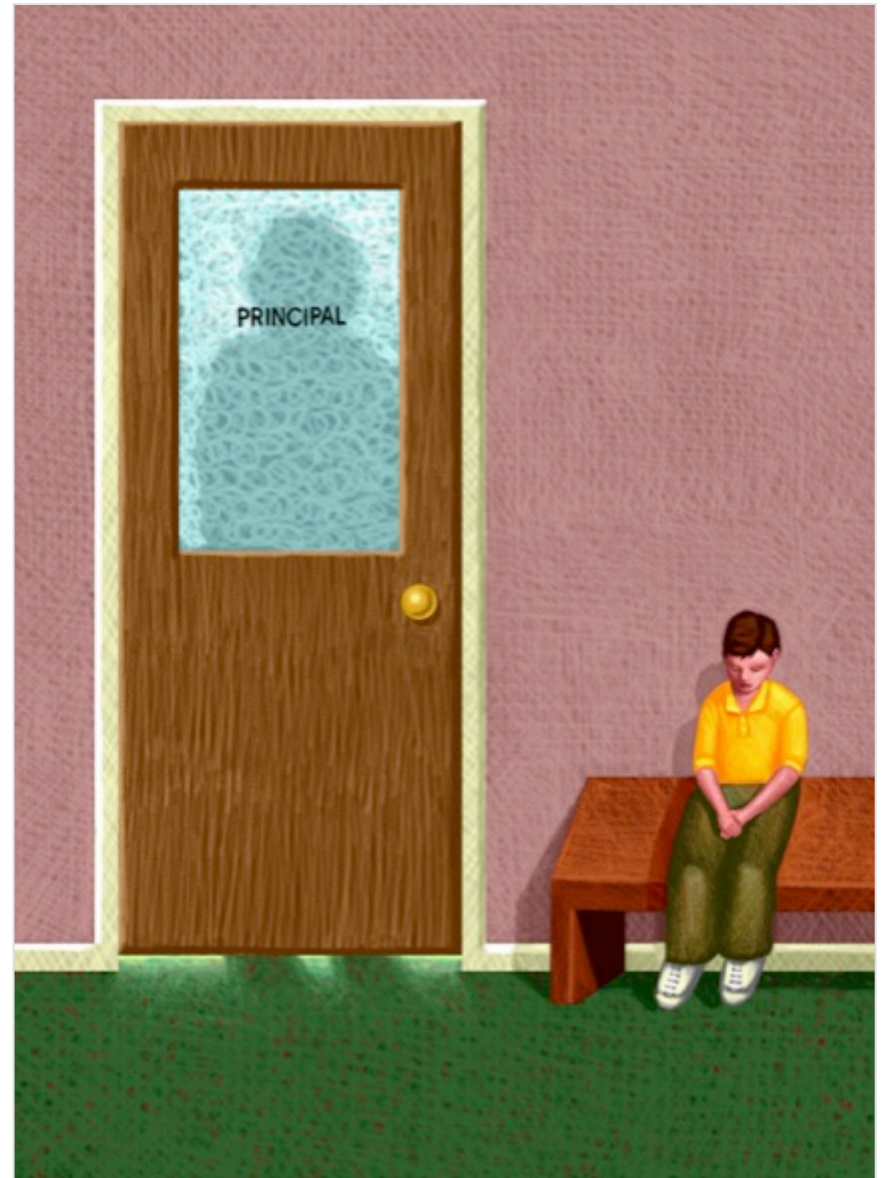


PART 5

Serious Misconduct

- Stealing
- Cheating
- Underage Smoking
- Drinking Alcohol

***Students who commit serious misconducts are liable for expulsion**





PART 6 ACADEMIC SERVICES

After School Tutoring

- Students receive mandatory academic support from certified teachers for:
 - Homework Assistance
 - Subject tutoring
 - Intensive English training
 - College entrance exam tutoring (SAT, AP, TOEFL)
- All students learn in a comfortable and supportive environment
- Weekly academic reports are issued to monitor each student's progress at school
- **Students who fall behind in their classes are identified immediately and given more attentive instruction**



PART 6 ACADEMIC SERVICES

Intensive English Support

ASG students are taught the mechanics of English in the following order: Listening, Speaking, Reading, Writing

- Student-Centered Instruction based on the most recent research
- Allows students to be proficient in 6 months and fluent in two years
- All teachers trained by:
The American English Institute

In-School Support Services

Guidance advisors & coordinators stationed in each school support students with:

- **Language difficulties**
- **Adjustment process**
- **Cultural issues**
- **Staying informed about relevant school programs and events**
- **Academic guidance**
- **Social, personal, emotional support**



ASG Advising Program

- A Personalized student support system
- Each ASG student is assigned an ASG Advisor according to their career and education interests, preferences, and objectives
- Students meet with their advisors at least once a month to:
 - **Track their academic progress**
 - **Track the steps taken towards achieving their goals**
 - **Craft new objectives upon goals completion and develop a roadmap for achieving them**
 - **Discuss student conduct, living accommodation, adjustment process**
 - **Identify any challenges students are facing**
 - **Advisors will recommend solutions and ensure students needs are met**
 - **Help students maximize their education experience at School & ASG**

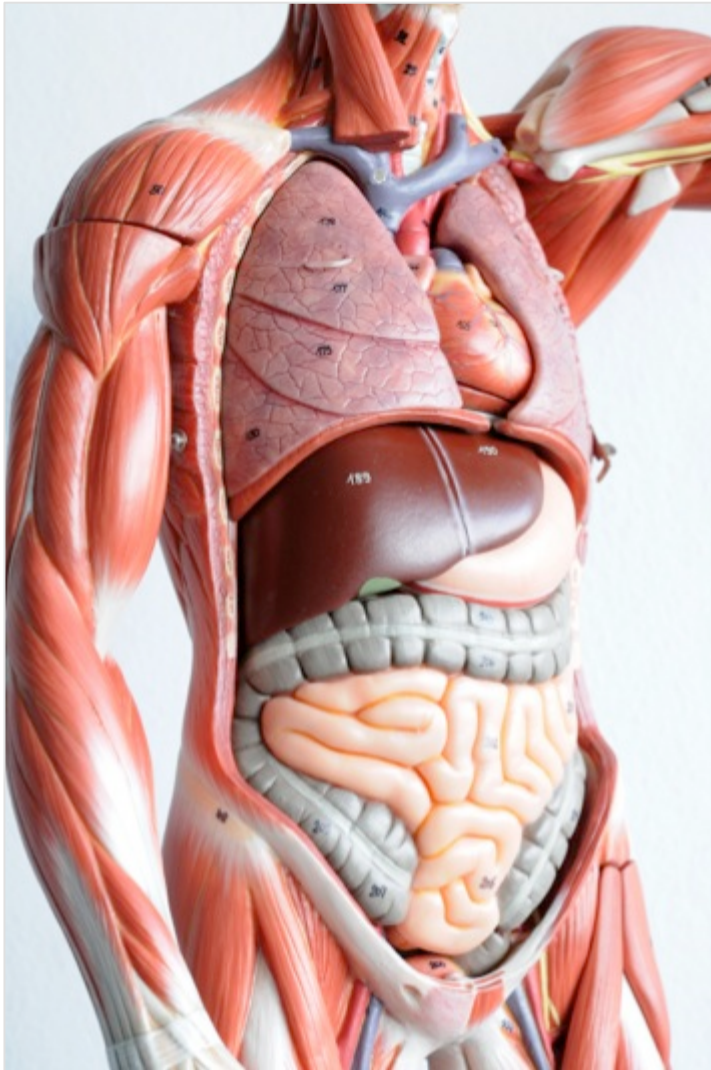
**In-House
Support
Services**



PART 6

Student Reports & Academic Advisors

- Academic advisors act as liaisons between ASG and the school to monitor students' academic progress
- Progress Reports are submitted to students' agents and family to review every quarter



PART 6

Challenging Subjects for Students with poor English skills

English, Theology & Biology
*ASG tutors are available to
support students*



ASG Provides Specialized Programs for Students of All Calibers

- **Credit recovery Program**
 - Students who require Summer courses to make up failed classes
 - For students who require better grades
 - All credit recovery course grades earned will replace past grades
 - Ensures that students who fall behind will graduate on time
- **Accelerated University Courses:**
 - Programs for students who want to strengthen their university application
 - Students can earn university-level credits by taking classes at ASG partner universities
- **Ivy Track**
 - ASG Advisors create planned roadmaps for students with the highest academic standards
 - A detailed selection of classes and programs designed for students who seek admission into the top universities

PART 6



Academic Advancement & Staying on Track

PART 6

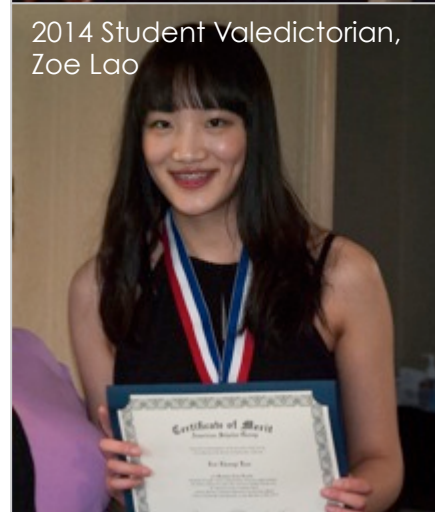
Student Awards

Academics Awards are given to students for:

- Academic Achievement
- Class Valedictorian (Top Student)
- Class Salutatorian (2nd Highest Student)
- Best Attendance
- Most improved
- Cum Laude (3.5 GPA)
- Magna Cum Laude (3.7 GPA)
- Summa Cum Laude (3.9 GPA)



Proud 2014 Awardees



2014 Student Valedictorian,
Zoe Lao



Director of Student Affairs,
Sheryl Lanning presenting Kai the
student achievement award

An Experience Beyond the Classroom

- ASG extra-curricular activities and events are designed to provide international students an immersive educational, cultural, and enjoyable experience of life in the American heartland
- Monthly ASG outing club trips, educational tours, sporting events
- ASG Clubs & Sports
- Special dining Events
- Holiday Celebrations



Pictures of Past Events



PART 7

ASG Clubs and Sports



- Soccer
- Basketball
- Tennis
- Paintball
- Gun Club
- Horse riding
- Kayaking
- White water rafting
- Camping
- Fishing
- Water Sports
- Winter Sports
- Hiking
- Local Tours
- Visits to Major U.S. Cities
- Visits to Museums
- Optional Excursion Events

SPECIAL EVENTS



Honor Banquet

This banquet is the first event held for new and returning students at the beginning of the academic year. At this event, returning students are honored and recognized for their scholastic achievements from the previous year.



Thanksgiving

During the Thanksgiving holiday, American Scholar students are invited to spend the holiday with staff and community families to experience and celebrate a traditional Thanksgiving feast.



Christmas Dinner & Dance

In America Christmas is one of the most anticipated and special occasions of the year. American Scholar students experience a glimpse of this holiday at the annual Christmas Dinner and Dance.

Lunar New Year

The Lunar New Year is one of the most exciting celebrations in the Asian Pacific Countries. American Scholar students share this celebration with community members as they welcome in the New Year together.



Spring BBQ

The Annual Spring BBQ Festival is held at the conclusion of the academic year. This event features traditional American picnic cuisine and roast suckling pig on a spit.



Commencement Luncheon

The American Scholar Group closes the academic year by honoring our scholars with the annual Senior Commencement Luncheon.





WEEKEND ACTIVITIES

Nearby Activities

Bowling
Snow Tubing
Basketball
Putt-Putt
Go Karts
Batting Cages
Movies
Horseback Riding
Paintball

Shopping

Shenango Valley Mall
Grove City Prime Outlets
Millcreek Mall
Ross Park Mall
Beachwood Place
Woodbury Common Outlets



FORMAL FRIDAYS

Friday formal dinners are held twice a month for the purpose of emphasizing the value of community engagement.

These occasions provide excellent opportunities for students to practice their etiquette, implement conversational skills and enjoy the company of all staff and students in a warm and hearty environment.



TOUR AMERICA

The American Scholar Group (ASG) offers complete immersion into the American experience through a series of travel excursions and exciting events. Visits to historical locations will provide international students with a better understanding of US history. These experiences will aid students in conceptualizing the geographical and historical influences that shaped the development of the US and its present-day culture.



GRADUATION





Our Scholars Are Going Places

Class 2014 Graduates have been accepted to the following prestigious universities



PENNSSTATE



ACADEMY of ART UNIVERSITY



Northeastern University



School of the Art Institute of Chicago



UNIVERSITY of WASHINGTON



THE GEORGE WASHINGTON UNIVERSITY
WASHINGTON DC



THE OHIO STATE UNIVERSITY



www.americanscholargroup.com

Life After ASG

- Academic Advisors can advise & assist ASG students with university placement:

- ASG partner universities
- Other universities



- **ASG Students are eligible for scholarships up to US\$64,000 for 4 years at our partner universities**

- Students automatically included in the ASG Alumni Network which allows them to:

- Receive continued academic counseling
- Receive annual news and updates
- Return for annual reunion gatherings and events



Ranked 12th Best
Value Regional University



Earn up to

US\$64,000

in Awards

American Scholar & Gannon University Scholarship

- Ranked 12th Best Value Regional University and 61st Best Regional University in the North by U.S. News & World Report
- Founded in 1925
- Four-year Liberal Arts Institution
- 4008 Total Student population (Fall 2012)
- 13:1 Student/Faculty ratio
- 54 Undergraduate majors, 8 Associate, 16 Graduate & 4 Doctoral Programs
- More than 70 student clubs and organizations
- 18 Varsity Sports teams



Ranked 29th Best
Northeastern Regional College



Earn up to

US\$56,000

in Awards

American Scholar & La Roche College Scholarship

- Ranked as the 29th best Northeastern regional college by U.S. News & World Report
- Located in North Hills of Pittsburgh, Pennsylvania
- Four-year Liberal Arts Institution
- 1700 undergraduate students
- 250 postgraduate students
- 12:1 Student/Faculty Ratio
- More than 50 undergraduate majors, 20 minors, and 3 graduate level programs
- More than 50 Clubs & Organizations
- 12 Varsity Sports teams



info@american-scholar.org

Phone: 724.885.1136

Fax: 724.638.5370

10 Penn Avenue, Greenville,
Pennsylvania 16125, USA

www.americanscholargroup.com

Earn up to

US\$48,000

in Awards

American Scholar & Thiel College Scholarship

- Ranked as the 27th best college among Northeastern regional colleges by U.S. News & World Report
- Founded in 1866
- Four-year Liberal Arts Institution
- 1081 Undergraduate population (Fall 2012)
- 14:1 Student/Faculty ratio
- More than 60 undergraduate majors, minors, and areas of study
- More than 50 student clubs and organizations
- 24 Varsity Sports teams



An Investment That Lasts a Lifetime



- Post-undergraduate help:
 - ASG can provide alumni with Optional Practical Training (OPT) opportunities
 - OPT programs allow students to stay in the U.S. for up to 24 months to gain work experience
 - ASG will sponsor H-1B visas for talented students
- OPT Programs in:
 - Accounting and Finance
 - Multimedia and Graphic Design
 - Business Management

American Scholar Group & Liberty Capital Group Optional Practical Training

For International Students All Majors are Welcome

American Scholar's Optional Practical Training (OPT) management trainee program is an exciting opportunity for recent international students who have graduated from colleges and universities. Participation in this program will enable students to apply their knowledge and gain real world experience in a professional environment. To apply for a position, please send resume and cover letter to info@american-scholar.org.



**TEAM
AMERICAN
SCHOLAR**
EMBRACE YOUR FUTURE



Gateway America

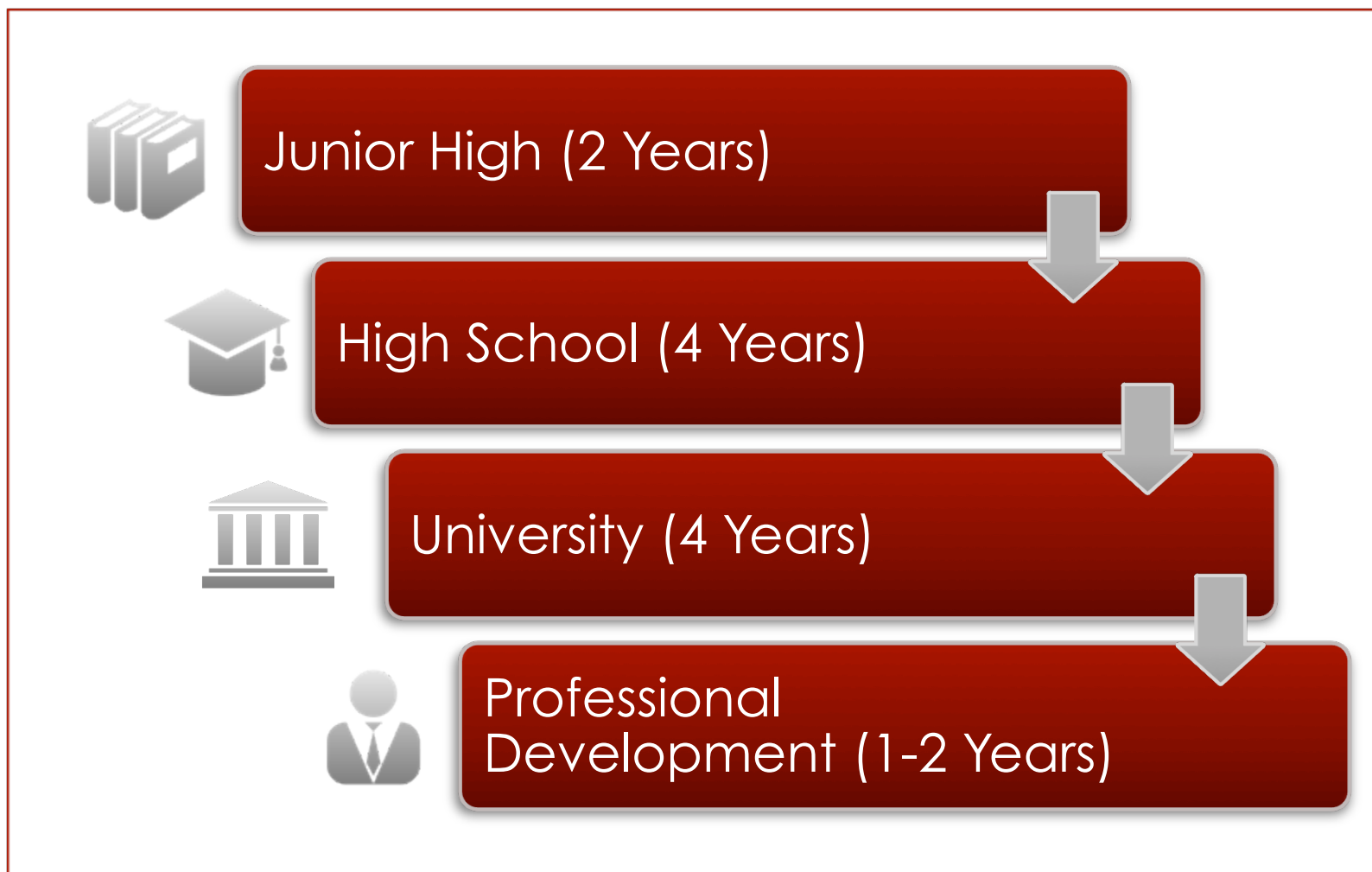
10 Penn Avenue, Greenville,
Pennsylvania 16125, USA

Phone: 724.885.1136

Fax: 724.638.5370

info@american-scholar.org

An ASG Educational Journey from Start to Finish: A 12-Year Commitment





Investment & Immigration Consulting

Investment and Immigration Consulting for ASG Students and their Families is also available.

Contact info@american-scholar.org for more details



10 Penn Avenue
Greenville, Pennsylvania 16125
United States of America
Website: www.americanscholargroup.com
E-mail: info@american-scholar.org
Phone: 724-885-1136
Fax: 724-638-5370