

# RESIDENTIAL-STYLE HOUSING



**Columbia House**



**Pennsylvania House**



**Princeton House**



**Stanford House**



**Harvard House**



**Yale House**



**Stonewall House**



**Facilities**



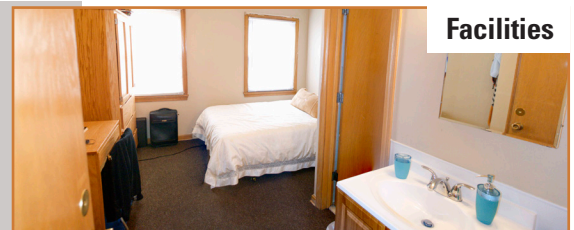
# DORMITORIES



**Meg Douglas Hamilton Hall**



**Jefferson Hall**



**Facilities**

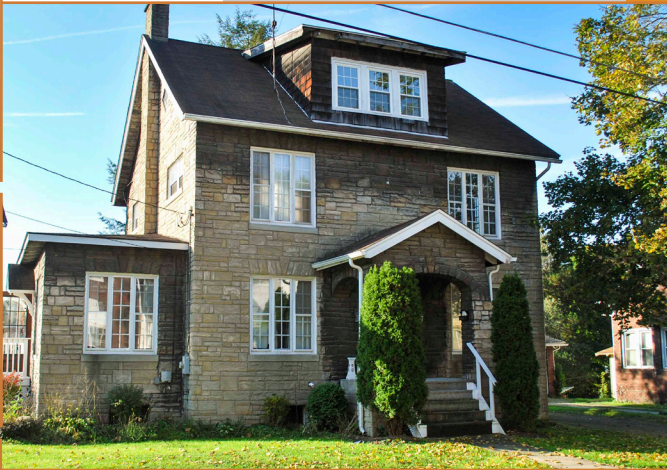


# STUDENT HOUSING



ASG students have a number of housing options, all of which are fully equipped with entertainment centers, study spaces, student lounges, laundry facilities, high speed internet, student accessible kitchens, and multiple bathrooms.

Each housing facility is ran by a houseparent, who oversees student welfare, discipline, and provides them with any necessary emotional support. Houseparents also prepare meals for students and maintain the general cleanliness of the facility.



## RESIDENTIAL-STYLE HOUSING

- Designed for students who require more structure and support
- 6-8 students
- 1 houseparent

**All housing facilities are furnished with a kitchen, common area and laundry appliances.**

**All rooms contain:** *Extra long twin bed | High-speed internet connection | Desk | Dresser | Closet or Wardrobe | Lamps | Chairs*



## COLLEGE-STYLE DORMITORIES

- Designed for students who desire more independence
- 20-30 students
- 2-3 houseparents



# AMERICAN SCHOLAR GROUP STUDENT HOUSING



American Scholar Group places students in American Schools and provides them housing, transportation services, dining services, and all necessary student engagement support services.

**TRADITIONAL  
MODEL**



## HOMESTAY

- Restricts students to one family's beliefs, preferences, values
- If things do not work out, it can create a very uncomfortable environment for a student
- Lack programs for academic tutoring, support, and counseling services
- Homestay families are typically not professional educators

**TRADITIONAL  
MODEL**



## BOARDING SCHOOL

- Students are expected to be independent and are often given too little support and structure
- Can become 'sink or swim environments'
- Such environments can leave students feeling distant, isolated, and with little support

**ASG  
MODEL**



## OUR HOUSING

- Combines the best of both models while eliminating the problems of each
- ASG Students enjoy the warm embrace and support of a community of professional teachers, tutors, advisors, counselors, houseparents, transportation & dining staff
- Students have the opportunity to develop strong friendships within their schools, housing-families and within the larger ASG community



10 Penn Avenue  
Greenville, Pennsylvania 16125  
United States of America  
Website: [www.americanscholargroup.com](http://www.americanscholargroup.com)  
E-mail: [info@american-scholar.org](mailto:info@american-scholar.org)  
Phone: 724-885-1136  
Fax: 724-638-5370